



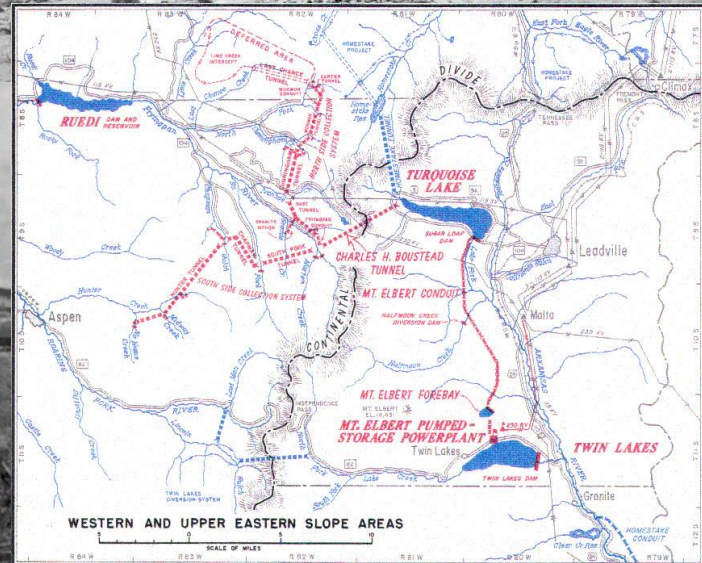
## Lake County Forestry & Fuels Update

Andy Lerch  
Feb 2024



## Context on Lake County

- Population: 7,436
- Avg. Elevation 10,790
- Area: 384 mi<sup>2</sup>
- Water: 7 mi<sup>2</sup>
- Extensive Mining History
- 74% Federal Land



# Lodgepole Pine Ecology

- ~ 25% lodgepole pine cover
- Quick to establish
- Grows extremely dense
- Fire return interval  
100-300+ years
- Low freq, high severity fire
- Forest Health



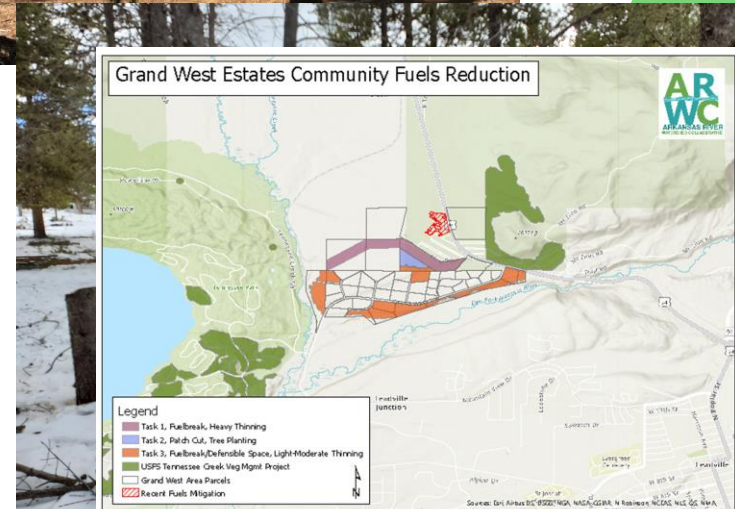
## Management Options

- Thinning
- Patch Cuts or Clearcuts
- Shaded Fuel Breaks
- Defensible Space



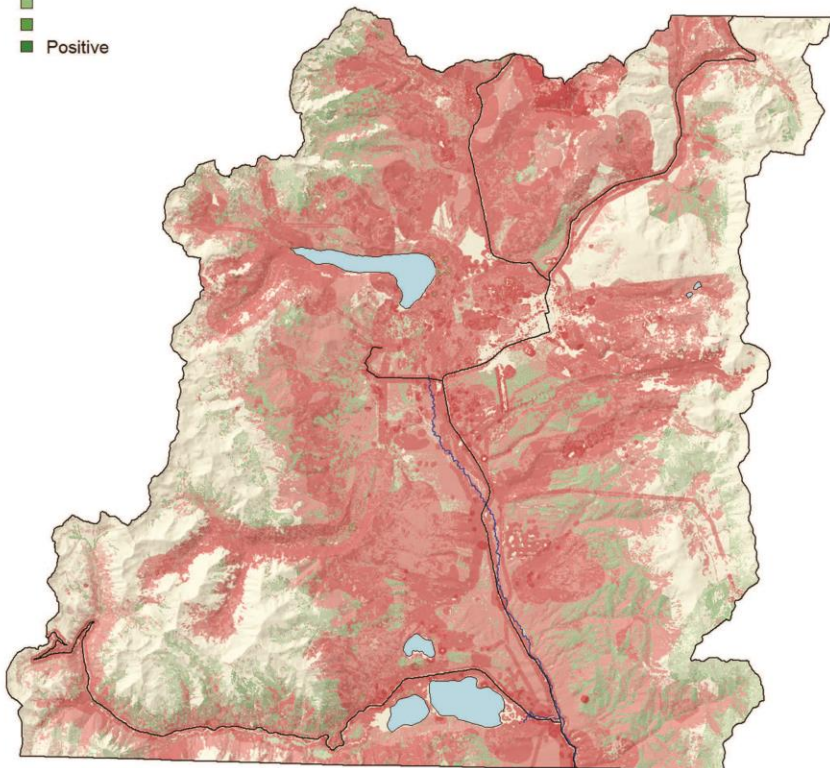
## ARWC Work Prior to CWPP Update

- 2018 FRWRM
  - 54.5 acres treated
  
- Grand West Estates
  - 96.5 acres completed



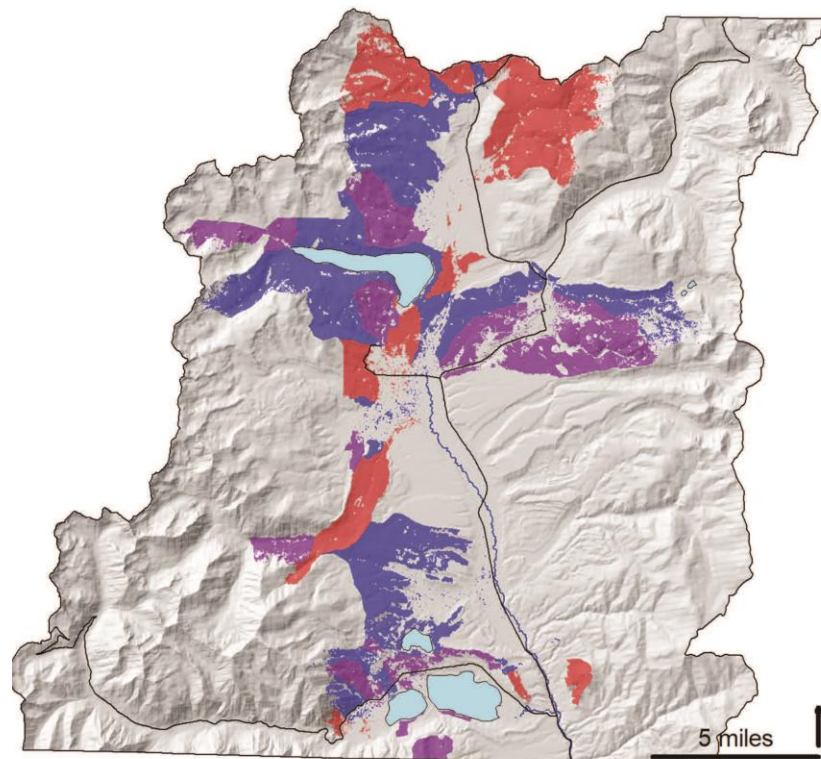
# Composite Conditional Net Value Change

- cNVC
- Negative
  - Neutral
  - Positive

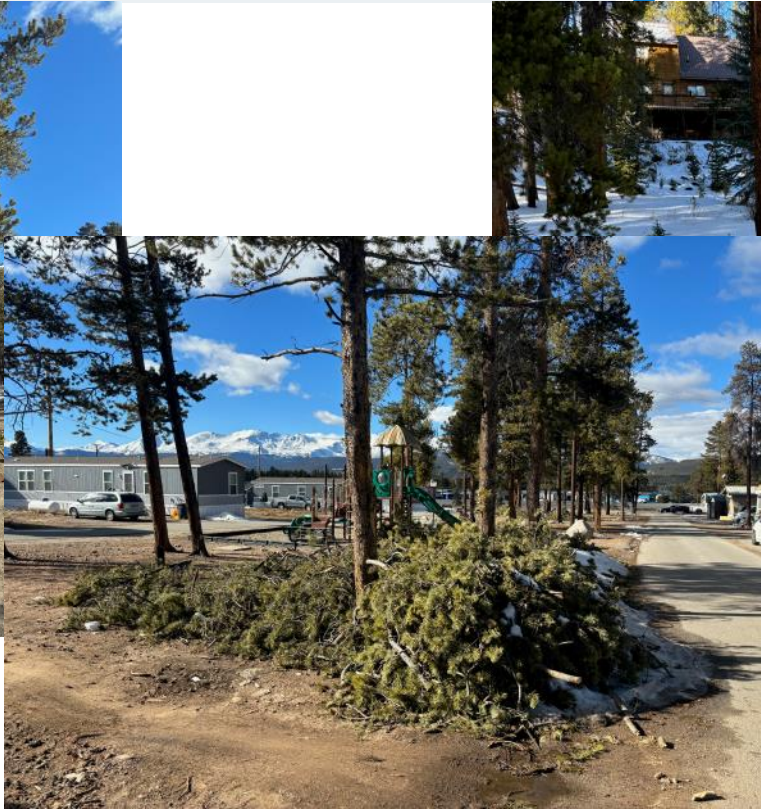


# Fuel Treatment Priorities

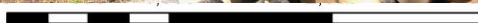
- Tier 1 (\$10M)
- Tier 2 (\$20M)
- Tier 3 (\$40M)



# Current Projects: Lake County Community Chipping Program



# Colorado Mountain College Treatment Area Lake County Community WUI Project (Phase II) Colorado Strategic Wildfire Action Program – Workforce Development Grant



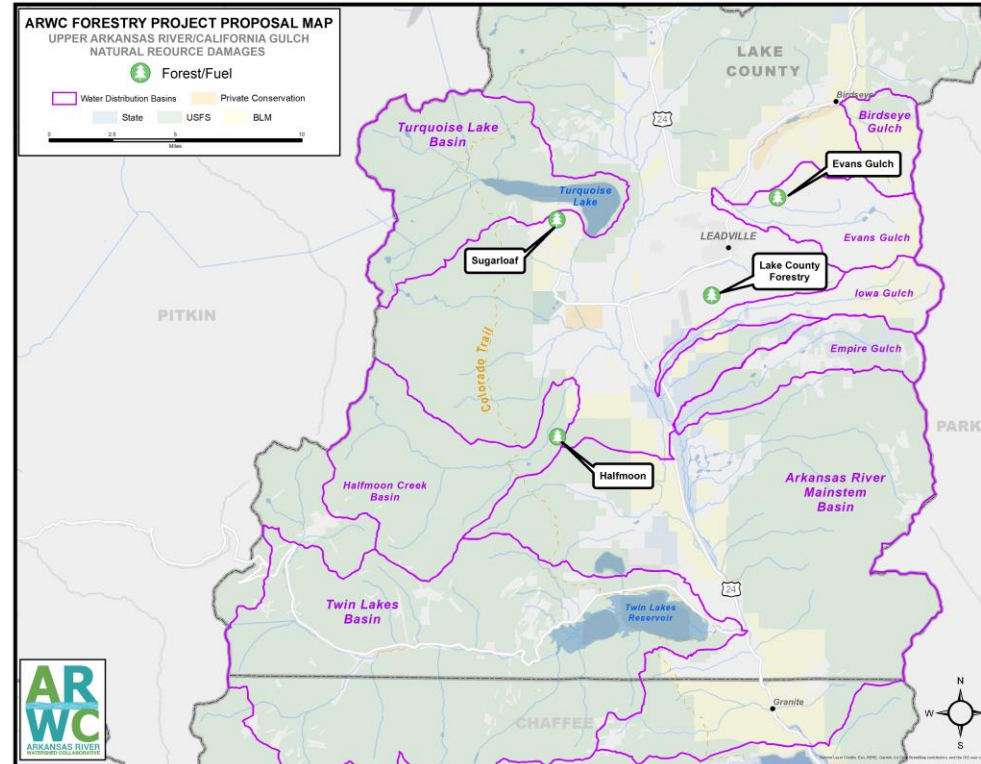
Feet



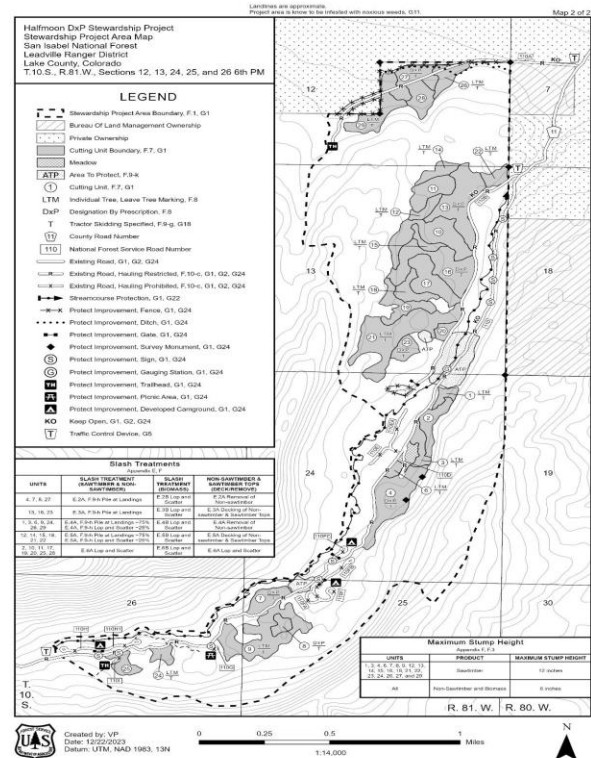
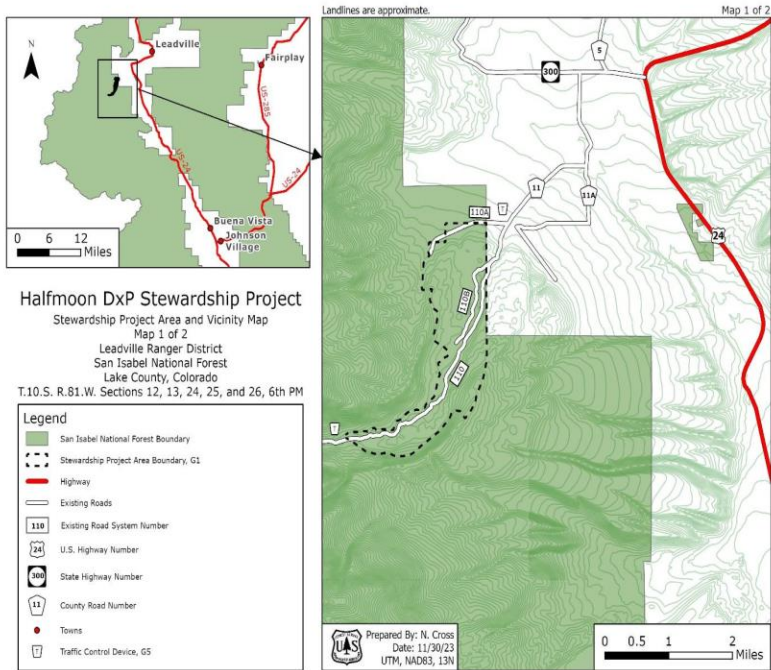
## Current Projects: Natural Resources Damages California Gulch Grant Upper Arkansas Comprehensive Watershed Restoration Project

### Uplands Watershed Protection

- 500 acres of treatments
  - USFS Halfmoon
  - Sugarloaf
  - Lake County BOCC
  - Evans Gulch

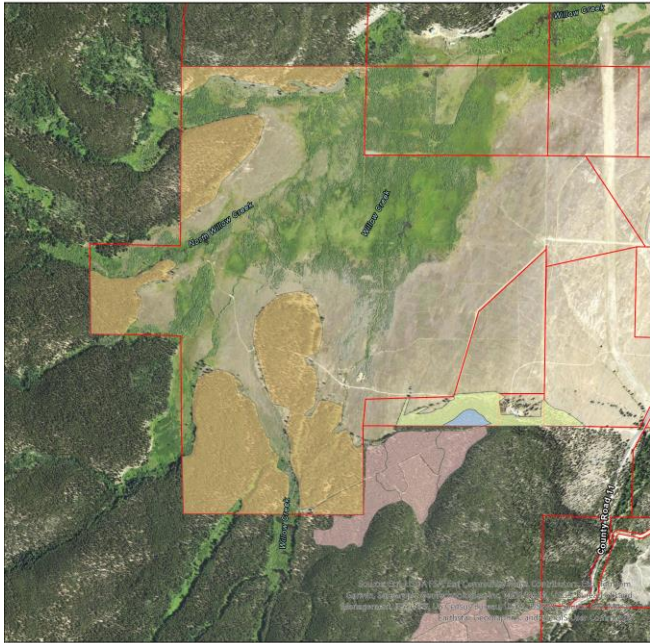


# NRD: Halfmoon DxP Stewardship Project



# Halfmoon Cross-Boundary

Natural Resources Damages: Uplands Watershed Protection  
Halfmoon Cross-Boundary Treatments

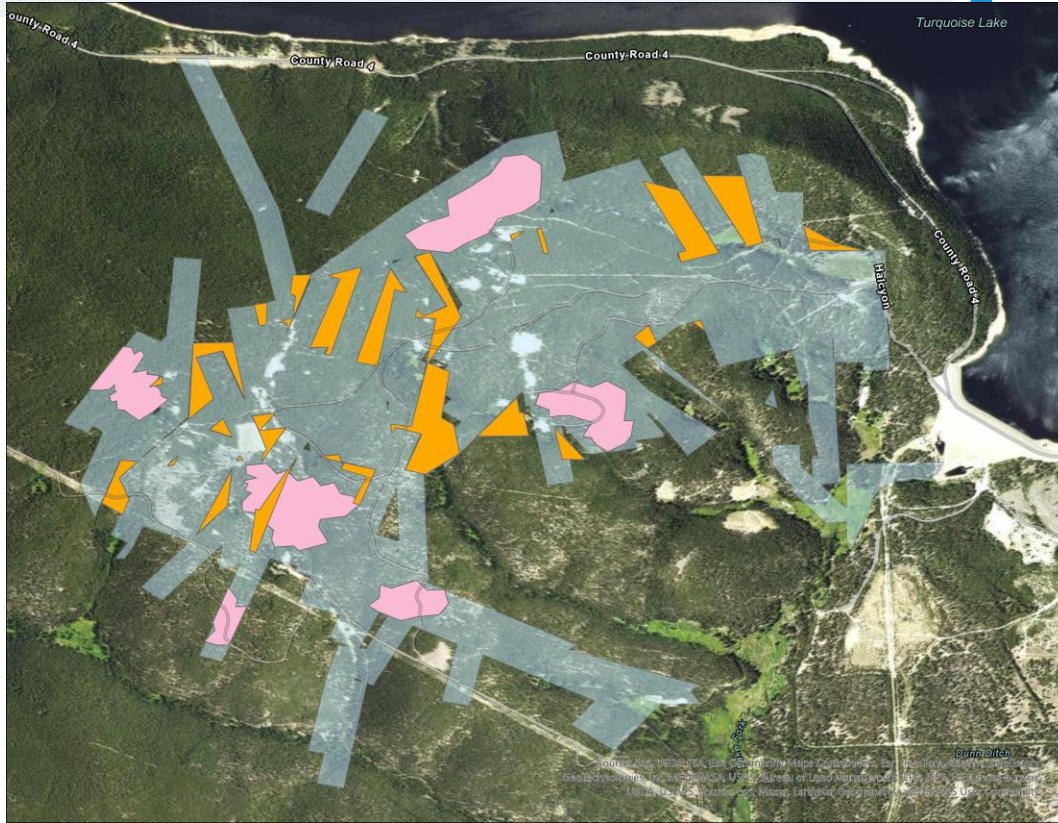


**Legend**

- Donale - Thin and Patch Cuts
- Becker - Patch Cut w/ Reserves
- Becker - Thin
- Halfmoon Steadship Agreement Cutting Units
- Private Parcels



# NRD Sugarloaf



## Next Steps

- Wildfire Ready Watersheds Twin Lakes
  - USFS Twin Lakes Project for potential stewardship
- BLM – Preparing additional NEPA in Iowa Gulch
- Continue COSWAP
- Partnership with Lake Forest Health Council

Thank You!

